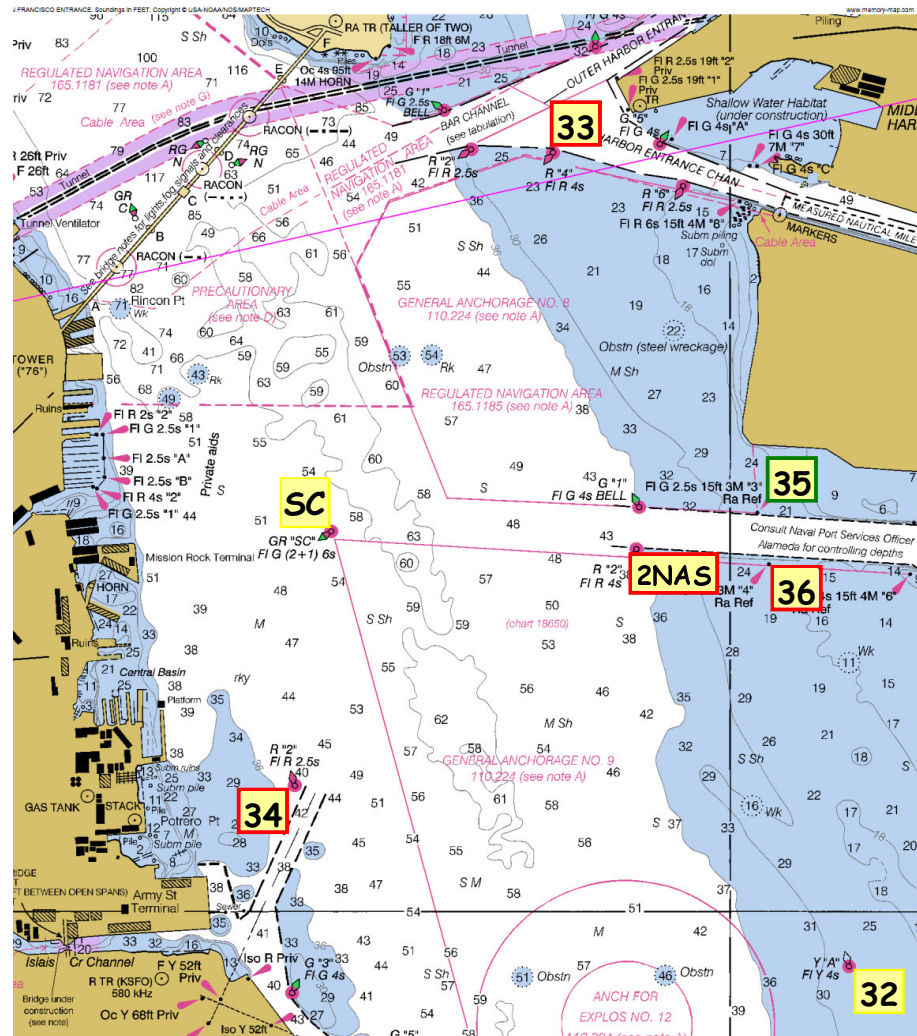


South Bay Courses

Course	Start	Finish	Distance
1	2NAS-S 32-P 33-P 32-P 33-P	2NAS-S	13.9
2	2NAS-S 33-S 36-S 33-S 32-P	2NAS-S	10.7
3	2NAS-S 33-S 32-S	2NAS-S	7.0
4	2NAS-S SC-P 32-P 35-P SC-P 35-P SC-P 36-P	2NAS-S	12.9
5	2NAS-S SC-P 32-P 35-P SC-P 34-P 36-P	2NAS-S	11.0
6	2NAS-S 34-P 32-P 34-P 32-P 35-P	2NAS-S	10.8
7	2NAS-S 34-P 32-P 35-P	2NAS-S	6.3
8	2NAS-S SC-P 32-S 34-S 35-P SC-P 36-P	2NAS-S	12.1



Not for Navigation

Mark	Description
2NAS	Red Buoy "2", Fl R 4s, Alameda NAS Entrance Channel
32	Yellow Buoy "A", Fl Y 4s, 2.5 nm East of Army Street Terminal
33	Red Buoy "4", Fl R 4s, Oakland Inner Harbor Entrance Channel
34	Red Buoy "2", Fl R 2s, 0.5 nm east of Potrero Point
35	Green Day Mark "3", Fl G 2.5s, Alameda NAS Entrance Channel
36	Red Day Mark "4", Fl R 4s, Alameda NAS Entrance Channel
SC	Red/Green Buoy "SC", Fl G (2+1), 1.0 nm ENE of Mission Rock Terminal

