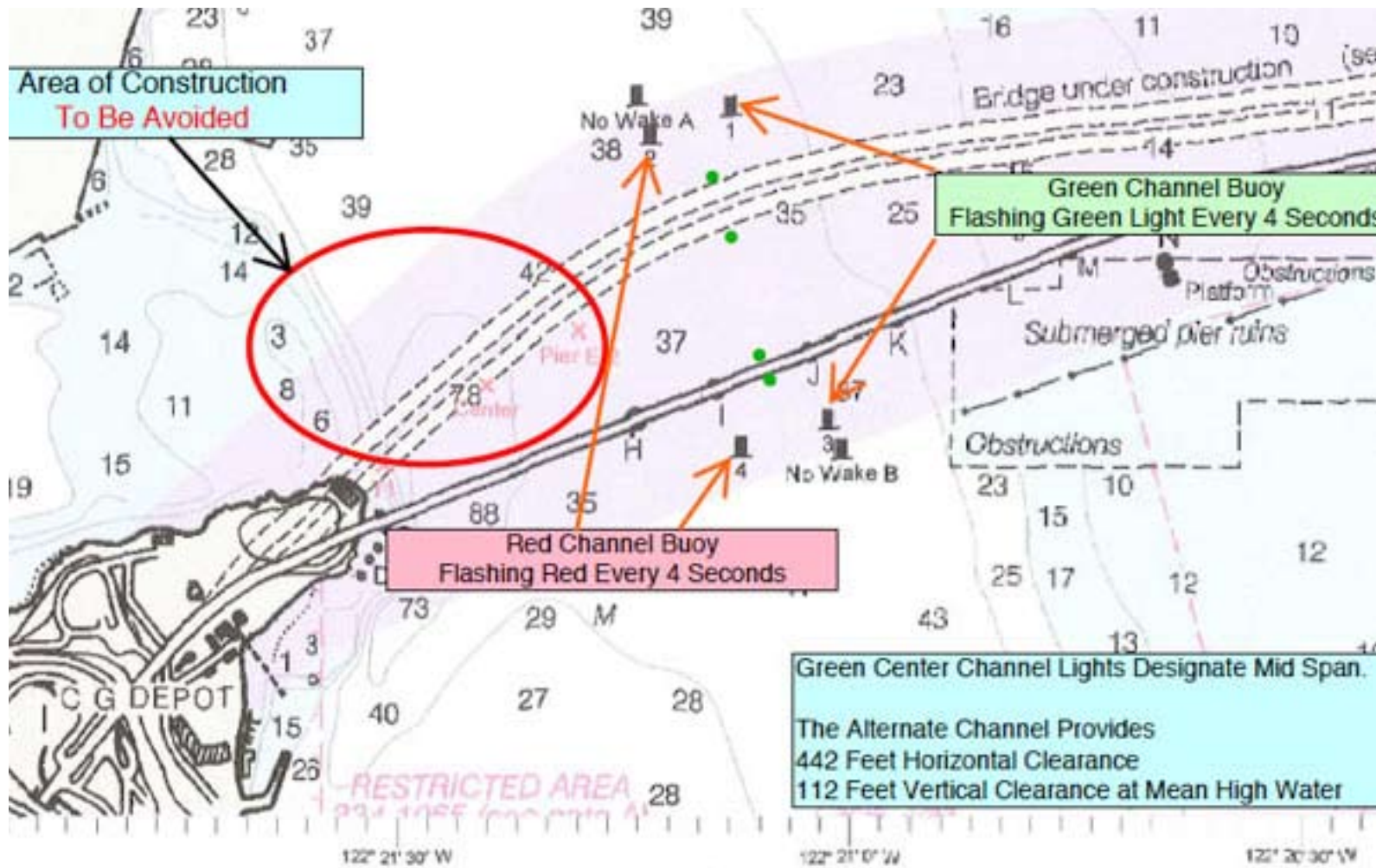


This is Page is for Information only It is not part of the Inter Club 2009 Sailing instructions

Since most of the sailors will be coming from south of the Bay Bridge this information is being provided for their information about the temporary change to the channel and restrictions on navigation in getting to the racing venue.

This chartlet is not intended to be part of the Sailing Instructions. It does not communicate any of the marks of the course!



NOTE:

There has been changes to the definition of Mark 3

There has been changes to Long Course #1

SAILING INSTRUCTIONS 2009 INTER-CLUB RACE SERIES

- 1. Rules:** This series is governed by the 2009-12 Racing Rules, the prescriptions of USSA, the Standing HDA Sailing Instructions of the San Francisco YRA, and these Sailing Instructions. Changes to these Instructions may be made prior to the start of any race. Committee will make every effort to give ample notification of changes, but as a last resort, participants shall be alert for Code Flag "L" flown from the Committee Boat. Permanent changes shall be posted at the participating clubs, and shall remain in effect for the remainder of the series without additional notice on each succeeding race day.
- 2. Responsibility:** The member clubs and organizers accept no responsibility for the safety or well being of the yachts and participants before, during, or after participating in these races. It is the sole responsibility of each skipper to decide whether to start or continue a race.
- 3. Management:** The series is under the management of Joint Inter Club Committee ("JIC") comprised of representatives from each participating club. Each club will host one or more races, and as such will provide the Principal Race Officer (PRO) for the hosted race with a Race Committee (RC). The JIC shall have the sole power to establish and interpret rules governing the series, and to determine eligibility.
- 4. Eligibility:** The series is open to keel ballasted monohull and multihull yachts with minimum LOA of 20 feet, and belonging to or chartered by members of the participating clubs and organizations. Those wishing to enter may do so by completing the Race Application and submitting it to the representative designated by his club or organization.
- 5. Interference with Commercial Traffic and Non-Competing Yachts:** Yachts must not interfere with commercial vessels, government vessels, or non-competing yachts. Inland Rules of the Road govern meetings with such vessels. Additionally, skippers are responsible to acquaint themselves with newly developed anti-terrorism security precautions that may prescribe standoff limits on ships and certain waters. Vessels violating this provision are subject to disqualification.
- 6. Ratings:** Each monohull competitor must furnish a Northern California PHRF certificate. Each multihull competitor must furnish a BAMA certificate. Yachts must race with all equipment (doors, cushions, anchor, etc.) required by Northern California PHRF standards.
- 7. Handicap System:** Races will be handicapped according to the PHRF Time-on-Distance system. The Joint Inter Club Committee will determine division assignments - prior to the first race.
- 8. Sails:** Non-spinnaker classes may fly a single sail for each mast, and a single foresail, which shall be attached to the boat in the manner of a jib. Boats using other sails (including, but not limited to spinnakers, gennakers, screechers, etc.) shall be assigned to a spinnaker fleet. Mainsail numbers as shown on the entry are required. The number on the foresail and spinnaker, if any, must be the same as the mainsail unless the RC is notified before the race.

9. Race Dates, Course, and Start Times:

Date	Sponsor	Race Course Venue	First Warning Gun	Channel
4/11	Alameda YC	South Bay	1225 Hours	VHF 69
5/10	Treasure Island YC	Central Bay	1225 Hours	VHF 68
6/13	Oakland YC	Central Bay-Long Course	1125 Hours	VHF 71
7/11	South Beach YC	South Bay	1225 Hours	VHF 66
8/15	Encinal YC	South Bay	1225 Hours	VHF 71
9/12	BAMA	South Bay	1225 Hours	VHF TBD

The courses are shown in **Table 1** attached.

The Race Committee may fly signal flag “R” with the course flag signifying that the course marks are to be rounded in the reverse order and passed on the opposite side to that listed on the course sheets.

The Race Committee may fly signal flag “T” with the course flag signifying that the course be sailed twice around. When the “T” flag is displayed, a yacht **must** pass through the start-finish line at the start of their second time around the course.

10. On-the-Water Communications and Check-in: All yachts must sail within hail of the Race Committee Boat to check in. Check-in by radio will not be accepted or acknowledged.

The RC will monitor the radio channel shown in Paragraph 9 for withdrawals and emergencies, and to broadcast instructions relevant to the race.

11. Minimum Equipment: All yachts are reminded that they must comply with the US Coast Guard equipment requirements for a recreational vessel.

12. Limiting Buoy: A buoy may be set to protect the Race Committee Boat. The triangle formed by the bow and stern of the Committee Boat and the limiting buoy is a restricted area into which no boat may sail. Any yacht hitting the RC Boat shall be protested and is subject to disqualification without privilege of exoneration under Rule 31.2.

13. Starting Signals: Races will be started using the following signals. Times shall be taken from the visual signals; the absence of a sound signal shall be disregarded

Signal	Flags & Course Signals	Sound	Minutes Before Start
Warning	Raise Class & Raise Course	1 gun	5
Preparatory	Raise P, I	1 Gun	4 1
One Minute	Drop P, I Drop Course	1 horn	Note that the Course Signal may not be dropped if the next class uses the same course.
Start	Drop Class	1 gun	0

14. Restricted Areas: Restricted areas are as shown in the Standing Sailing Instructions of the YRA, which are available in the YRA Master Schedule. Violators are subject to protest.

- 15. Restricted Start/Finish Line:** Any yacht whose Preparatory signal has not been made must keep clear of those yachts whose Preparatory signal has been made. Yachts shall not cross the start/finish line unless their Preparatory signal has been made and they are preparing to start, starting, or finishing. **Except** at the start of the second time around of a “twice around” course as indicated by the Race Committee flying of the “T” flag with the course flag at the start of the race.
- 16. Postponement:** Code Flag “AP” (Answering Pennant) and two sound signals shall be made from the RC Boat to signify a postponement. The postponement ends with the lowering of “AP” and one sound followed in one minute by the display of a warning signal and sound. (Supplements rule 27.3).
- 17. Individual and General Recalls:**
- 17.1 Individual Recalls:** Code Flag “X” accompanied by one sound signal. The Race Committee may hail by calling by bullhorn and/or radio using the channel shown in paragraph 9.
- 17.2 General Recalls:** “First Substitute” flag with two sounds. If the warning flag for next class has already been raised, that start will be postponed. One minute after the recall flag is lowered; the starting sequence for the recalled fleet will begin. Another recall will move the offending fleet start to the last start of the day. (This changes rule 29.2)
- 18. Shortened Course:** The RC Boat or a Stake Boat shall post itself in the vicinity of a mark of the course and will display Code Flag “S” to indicate a shortened course. The shortened finish line shall be between the posted boat and nearest mark of the course.
- 19. Abandonment:** An abandoned race is declared by Code Flag “N” accompanied by three sound signals. A radio announcement may be made from the Committee boat.
- 20. Time Limit:** The time limit shall be 1700 hrs. Any yacht not finishing within the time limit shall be scored “DNF”. This modifies Rule 35 Time Limit and Scores.
- 21. Scoring:** The low point scoring system RRS A4 is modified as follows: points assigned to (OCS, DNF or RAF = boats entered + 1; (DNC or DNS) = boats entered + 2; a boat disqualified (DNE or DSQ) = boats entered + 3. A DSQ for safety violation may be changed to DNE (modifies 88.3b). Ties are broken in accordance with RRS A7 and A8.
- 22. Throw Outs:** A yacht’s worst finish (except “DNE”) shall be thrown out when determining the final series standings.
- 23. Protests:** Protests shall be filed in accordance with RRS Part 5. Protests must be delivered to a Committee Representative by Monday following the race or mailed to the Inter-Club RC, c/o Oakland Yacht Club, 1101 Pacific Marina, Alameda 94501-1157. Mailed protests must be postmarked no later than Monday following the race. At the Joint Inter Club Committee’s choice, a mediator designated by the host club of that race may hear the protest. One person will represent each party at the mediation. No witnesses may be called. At the conclusion of the mediation hearing, the protest may be withdrawn or one or both parties may withdraw from the race and scored RAF. If the protest is not resolved by mediation, a formal protest hearing will be scheduled on or before the 2nd Thursday following the race.
- 24. Race Results:** Race results will be e-mailed or faxed by the designated scorer to each participating club immediately after the race. Results will also be posted at Oakland YC and on their website at <http://www.sfbayraces.com/IC000.php>.
- 25. Trophies:** Trophies will be presented at a date and location to be designated prior to the end of the series.

26. Withdrawals/Retiring: A yacht retiring prior to the finish must notify the Race Committee on the designated channel shown in paragraph 9 or by coming within hail of the Race Committee boat. Failure to do so may result in a protest by the Committee. If upheld, the offending yacht may be scored DSQ.

Mark #	Description
1	Treasure Island
2	Alcatraz Island
3	Temporary Orange or Yellow Buoy approx. 0.5 nm north of the Bay Bridge span H-I
6	Yellow Sphere, "M", 200 yds. North of Ft. Mason Docks
7	Red Channel Buoy "2", FI R 6s, 1.2 nm east of Alcatraz
8	Red Channel Buoy "4", FI R 4s, 1.0 nm east of Point Blunt
9	Temporary yacht club buoy 0.5 nm South of the Berkeley Pier
12	G "1" FI G4s, Little Harding Rock
15	Yellow Sphere "Y" - 0.5 nm east of Yellow Bluff
16	Blackaller Buoy - Yellow Sphere "C", 0.2 nm East of Ft. Point
17	Harding Rock Buoy - RG, "HR", FI (2+1) R 6s
18	Blossom Rock Buoy - GR, "BR", FI (2+1) G 6s, Bell
24	East Quarry Point - R, "6", FI R 4s, Bell
32	Yellow Buoy "A", FI Y 4s, 2.5 nm East of Army Street Terminal
33	Red Buoy "4", FI R 4s, Oakland Inner Harbor Entrance Channel
34	Red Buoy "2", FI R 2s, 0.5 nm east of Potrero Point
35	Green Day Mark "3", FI G 2.5s, Alameda NAS Entrance Channel
36	Red Day Mark "4", FI R 4s, Alameda NAS Entrance Channel
2NAS	Red Buoy "2", FI R 4s, Alameda NAS Entrance Channel
AS	Yellow sphere, approx 0.25 nm East of BVBC
G	Yellow Can "G" or Temporary Orange Triangle YC Buoy on Olympic Circle
FC	Temporary club buoy, approx. 0.25 nm north of the entrance to Clipper Cove (near TI)
OAK	Temporary yacht club buoy off Oakland Yacht Club
SC	Red/Green Buoy "SC", FI G (2+1), 1.0 nm ENE of Mission Rock Terminal
SH	Southampton Shoal Day Mark - ISO R 6s, 32ft., 6M, Bell
BBSI	Bay Bridge PIER I

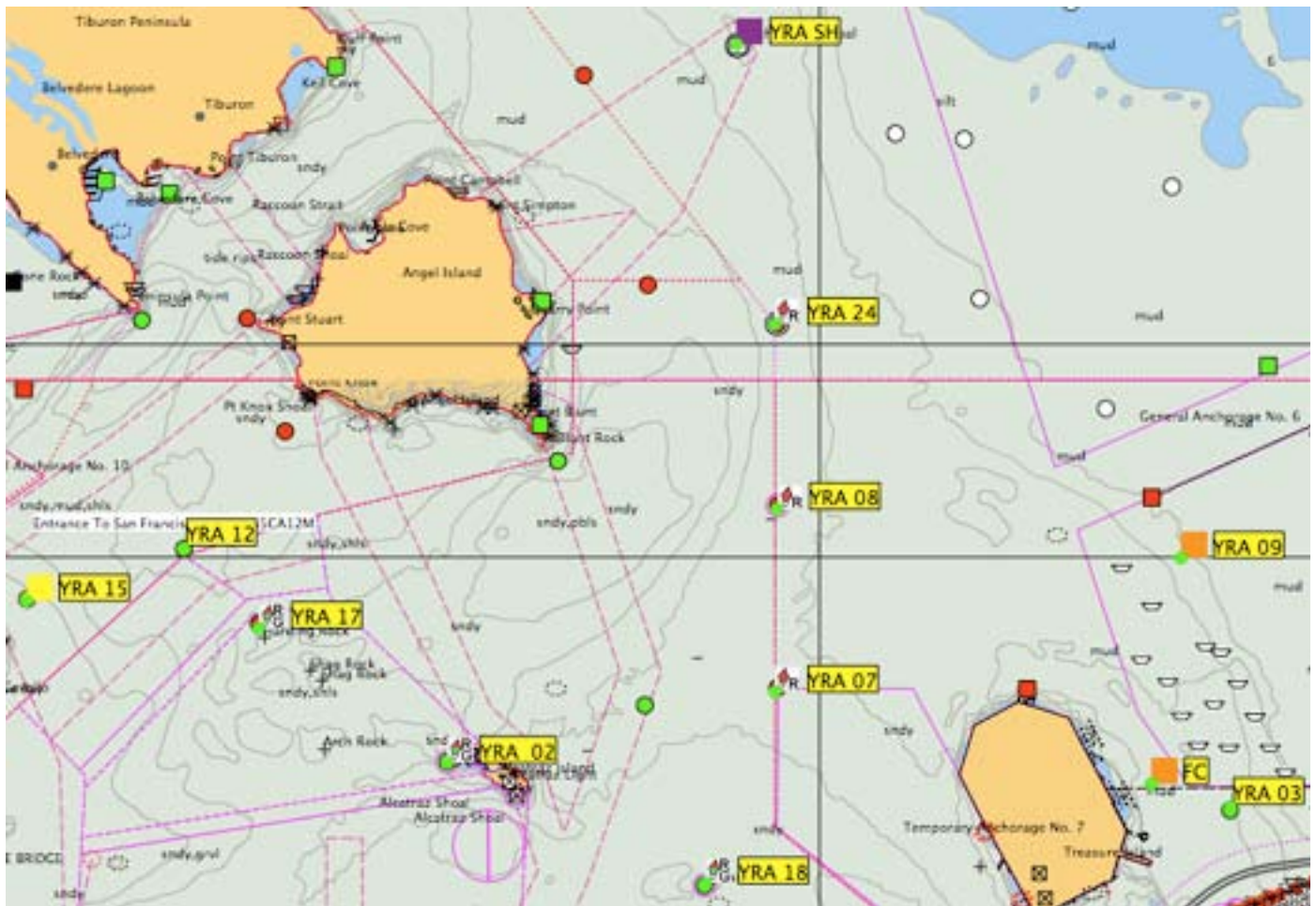
Start Lines

9	Central Bay: Between a temporary yacht club buoy 0.5 nm South of the Berkeley Pier and an orange flag on the Committee Boat. The committee boat will then move to the finish location, see FC below.
2NAS	South Bay: Between Buoy "2", FL R 4s, at the Alameda Naval Air Station Channel entrance and an orange flag on the Committee Boat.

Finish Lines

FC	Central Bay: a temporary yacht club buoy - "FC" located approximately 0.25 nm North of the entrance to Clipper Cove on Treasure Island and an orange flag on the Committee Boat.
2NAS	South Bay: All courses will have the same start and finish line - 2NAS.
OAK	Temporary Yacht Club Buoy on the estuary, off Oakland Y. C. pier 5 & 6

CENTRAL BAY MARKS - INTER CLUB



SOUTH BAY MARKS - INTER CLUB

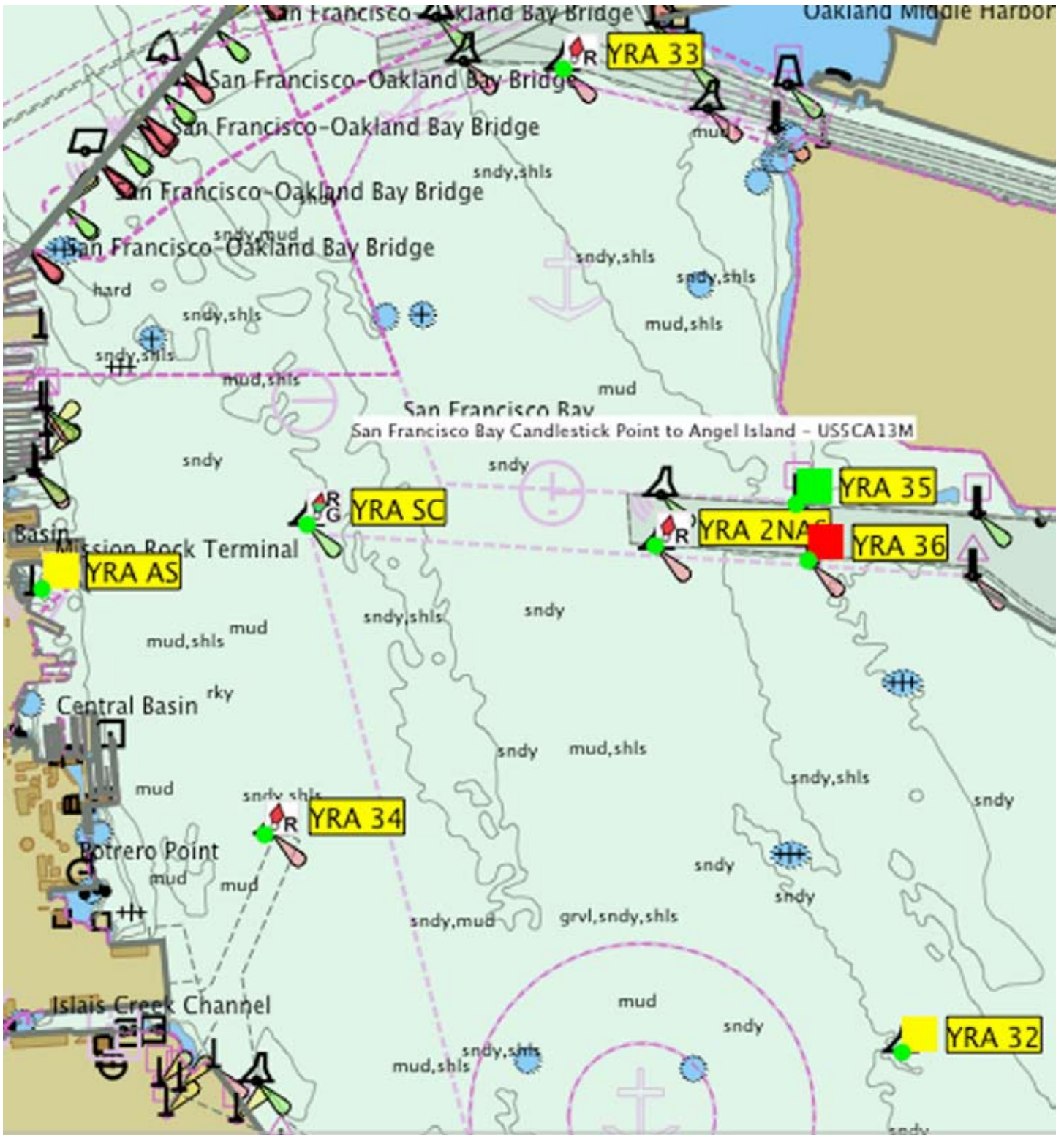


TABLE 1 - Inter Club Courses

Central Bay

Course #	Start								Finish	Distance
1	9-S	SH-S	3-S						FC	8
2	9-S	SH-S	3-S	8-S	3-S				FC	13
3	9-S	3-S	SH-S						FC	9.2
4	9-S	3-S	SH-S	3-S	8-S				FC	14.1
5	9-S	7-S	3-S	7-S	3-S				FC	9.5
6	9-S	2-S	1-S	3-S	1-P	2-S	1-S	3-S	FC	15.9
7	9-S	17-S	8-S	3-S	1-P	17-S	8-S	3-S	FC	19.5
8	9-S	2-S	24-S	3-S					FC	10
9	9-S	2-S	17-S	SH-S	3-S				FC	12.8

Central Bay - Long Course

Course #	Start								Finish	Distance
1	9-S	12-S	SH-S	BBSI					OAK	18.1
In course 1 above, BBSI shall be left to Starboard and not rounded										
2	9-S	17-P	18-P						OAK	13.7
In course 2 above, 18 shall be left to port and not rounded										

South Bay

Course #	Start								Finish	Distance
1	2NAS-S	32-P	33-P	32-P	33-P				2NAS	13.9
2	2NAS-S	33-S	36-S	33-S	32-P				2NAS	10.7
3	2NAS-S	33-S	32-S						2NAS	7
4	2NAS-S	SC-P	32-P	35-P	SC-P	35-P	SC-P	36-P	2NAS	12.9
5	2NAS-S	SC-P	32-P	35-P	SC-P	34-P	36-P		2NAS	11
6	2NAS-S	34-P	32-P	34-P	32-P	35-P			2NAS	10.8
7	2NAS-S	34-P	32-P	35-P					2NAS	6.3
8	2NAS-S	SC-P	32-S	34-S	35-P	SC-P	36-P		2NAS	12.1
9	2NAS-S	SC-P	36-P	AS-P	36-P	SC-P	36-P	35-P	2NAS	12.1
10	2NAS-S	SC-P	36-P	35-P	AS-P	36-P	35-P		2NAS	8.9
11	Intentional left blank									
12	2NAS-S	SC-P	36-P	SC-P	36-P				2NAS	6.8