

INTER CLUB SERIES - 2010

SAILING INSTRUCTIONS

1. RULES

The regatta will be governed by the Racing Rules of Sailing (RRS), 2009-2012 including the January 2010 amendments, the prescriptions of U.S. Sailing Association; the rules of the participating Classes, and by these Sailing Instructions. If there is conflict, these Sailing Instructions prevail.

Boats shall not impede the passage of ship traffic that can safely navigate only within a narrow channel or fairway, (see U.S. Department of Commerce chart 18649 for designated narrow channels and fairways of SF Bay) or fishing or other vessels with restricted ability to maneuver. Boats identified by sail number who endanger their own safety or that of the commercial or government vessel will be subject to protest by the Race Committee or contestant and face possible disqualification. A protest for allegations of the above will be heard by a protest committee whether or not the requirements of or RRS 61.1 (a) and (b) have been fulfilled or exclusions referenced in RRS 60.2(a) have been met. A disqualification for a safety violation of this section shall be considered as a disqualification not excludable (DNE).

Boats must comply with the United States Coast Guard's requirements for recreational vessels, RRS 1.2 and minimum additional equipment prescribed by her Association.

All competitors are required to wear life jackets or other adequate personal buoyancy while racing. This changes RRS 40.

2. COMMUNICATION WITH COMPETITORS

Notices to competitors will be posted on the Inter Club website before 12 Midnight on the day before the race.

All yachts must sail within hail of the Race Committee Boat to check in before the first warning sound.

The Race Committee may broadcast race information on VHF channel listed in Section 3.

3. RACE DATES, RACE LOCATION, VHF CHANNEL

Race	Date	First Signal	Race Committee	Course	VHF
1	04/10/10	12:25:00	Island Yacht Club	South Bay	71
2	05/08/10	12:25:00	Treasure Island Yacht Club	Central Bay	72
3	06/12/10	11:25:00	Oakland Yacht Club	Central Bay	78
4	07/10/10	12:25:00	South Beach Yacht Club	South Bay	72
5	08/14/10	12:25:00	BAMA	South Bay	63
6	09/11/10	12:25:00	Encinal Yacht Club	South Bay	66

4. COURSES

The courses and marks are described on the attached **Course Sheet**.

5. THE START

It is the Race Committees intention is start Divisions as set out in the **Starting Order Sheet** with Divisions starting at 5 minute intervals. The Race Committee reserves the right to changes the starting order and starting interval at their discretion.

6. RECALLS

When an Individual Recall has been signaled the Race Committee may hail the sail number(s) of the boat(s) identified on the course side of the starting line after the start signal by loud hailer and or VHF channel shown in Section 3.

When a general recall has been signaled, the start(s) for any succeeding division(s) will be postponed accordingly.

7. RESTRICTED AREA

The restricted areas for this Regatta are listed on Page 7. All restricted areas are designated as obstructions.

A yacht found to have violated a restricted area shall receive a 20% penalty calculated as set out in RRS 44.3(c).

8. TIME LIMIT

No warning signals will be made after 1600 hours. Boats not finishing before 1700 Pacific Time on the day of the race will be scored "DNF."

9. PROTESTS

Protests mailed to the Inter-Club RC, c/o Oakland Yacht Club, 1101 Pacific Marina, Alameda 94501-1157 with a post mark no later than the Monday following the Race. At the Host Club's option, a preliminary non-binding arbitration may be order before the protest hearing.

10. RETIRING FROM A RACE

Competitors retiring before finishing from a race shall notify the Race Committee as soon as possible in person or by VHF shown in Section 3. Competitors failing to do so will be scored "DSQ" by the Race Committee. This changes RRS A5, RRS 61, RRS 63, and RRS 64.

11. SCORING

The low point scoring system, RRS Appendix A, will apply with the following changes:

Boats scored "DNS," "OCS," "DNF," or "RAF" shall be scored the number of starters in the race plus 1 point.

Boats scored "DSQ" shall be scored the number of starters in the race plus 2 points.

However, a "DSQ" for a safety violation as outlined in Section 1, Rules, shall be considered as a disqualification not excludable (DNE.)

Boats scored "DNC" shall be scored the number of starters in the race plus 3 points.

This regatta consists of 6 races. At least one boat in a division must finish before the time limit for a race to be scored.

When fewer than five race have been scored, a yacht's sereis score willbe the total of her race scores.

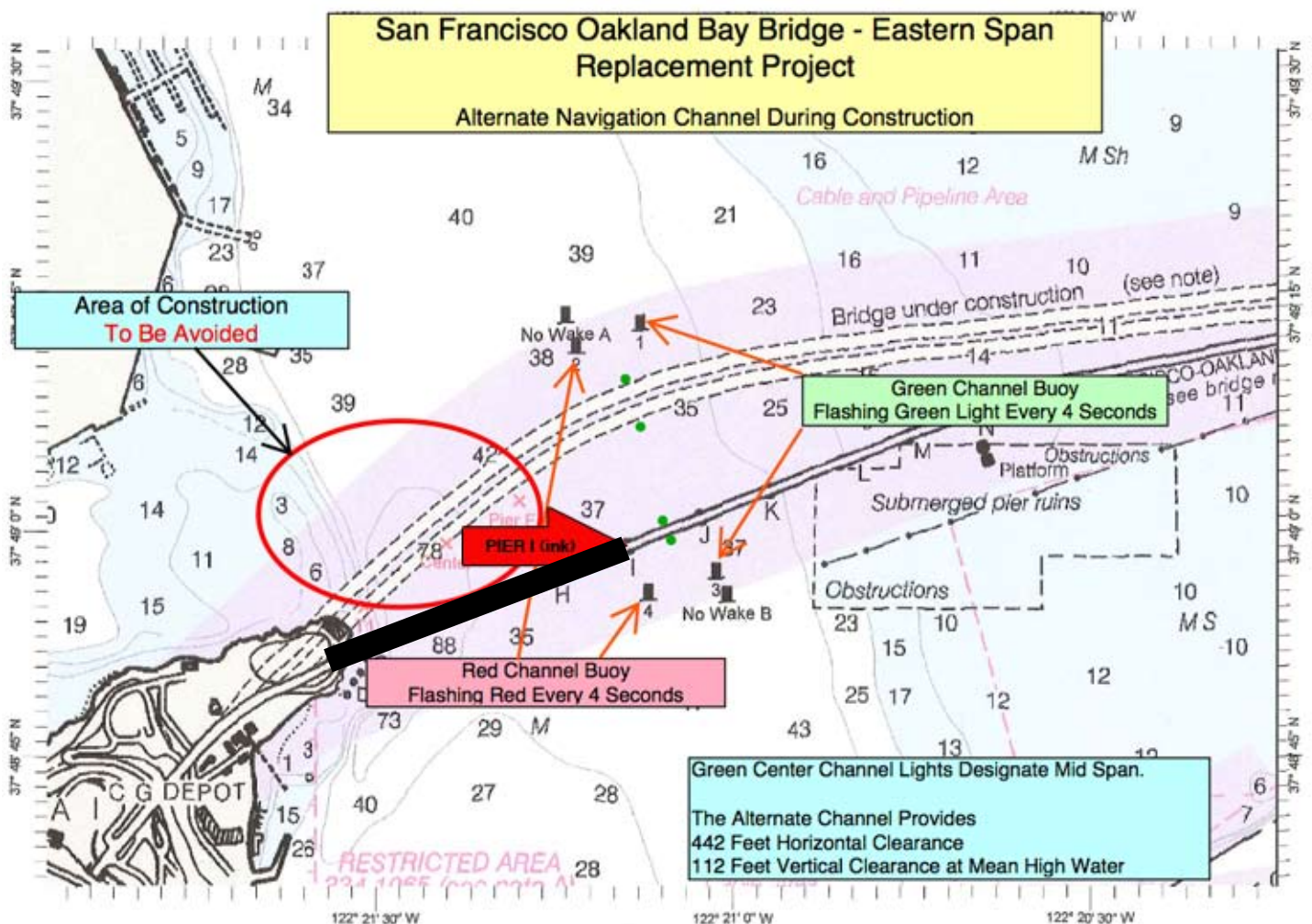
When five or more races have been scored, a yacht's score will be the total of her race scores excluding her worst excludable score.

Bay Bridge Construction

During the construction of the Bay Bridge, there may be Notices to Mariners that limit passage through the construction area. At this time (March 2010), an alternate channel has been established between Piers I and J of the old Bridge.

From the Inter Club Series, a line (see below) from the most easterly shore of Yerba Buena Island to Pier I (India) will be restricted while racing. When racing under the East span on the Bay Bridge, all Boats MUST pass to the EAST of Pier I (India).

Future Notices to Mariners may place additional restrictions and will take precedents over these Sailing Instructions.



Mark #	Description
1	Treasure Island
2	Alcatraz Island
3	Temporary Orange or Yellow Buoy approx. 0.5 nm north of the Bay Bridge span H-I
6	Yellow Sphere, "M", 200 yds. North of Ft. Mason Docks
7	Red Channel Buoy "2", FI R 6s, 1.2 nm east of Alcatraz
8	Red Channel Buoy "4", FI R 4s, 1.0 nm east of Point Blunt
9	Temporary yacht club buoy 0.5 nm South of the Berkeley Pier
12	G "1" FI G4s, Little Harding Rock
15	Yellow Sphere "Y" - 0.5 nm east of Yellow Bluff
16	Blackaller Buoy - Yellow Sphere "C", 0.2 nm East of Ft. Point
17	Harding Rock Buoy - RG, "HR", FI (2+1) R 6s
18	Blossom Rock Buoy - GR, "BR", FI (2+1) G 6s, Bell
24	East Quarry Point - R, "6", FI R 4s, Bell
32	Yellow Buoy "A", FI Y 4s, 2.5 nm East of Army Street Terminal
33	Red Buoy "4", FI R 4s, Oakland Inner Harbor Entrance Channel
34	Red Buoy "2", FI R 2s, 0.5 nm east of Potrero Point
35	Green Day Mark "3", FI G 2.5s, Alameda NAS Entrance Channel
36	Red Day Mark "4", FI R 4s, Alameda NAS Entrance Channel
2NAS	Red Buoy "2", FI R 4s, Alameda NAS Entrance Channel
AS	Yellow sphere, approx 0.25 nm East of BVBC
G	Yellow Can "G" or Temporary Orange Triangle YC Buoy on Olympic Circle
FC	Temporary club buoy, approx. 0.25 nm north of the entrance to Clipper Cove (near TI)
OAK	Temporary yacht club buoy off Oakland Yacht Club
SC	Red/Green Buoy "SC", FI G (2+1), 1.0 nm ENE of Mission Rock Terminal
SH	Southampton Shoal Day Mark - ISO R 6s, 32ft., 6M, Bell
BBSI	Bay Bridge PIER I - see page 4

Start Lines:

9	Central Bay: Between a temporary yacht club buoy 0.5 nm South of the Berkeley Pier and an orange flag on the Committee Boat. The committee boat will then move to the finish location, see FC below.
2NAS	South Bay: Between 2NAS at the Alameda Naval Air Station Channel entrance and an orange flag on the Committee Boat.

Finish Lines:

FC	Central Bay: a temporary yacht club buoy - "FC" located approximately 0.25 nm North of the entrance to Clipper Cove on Treasure Island and an orange flag on the Committee Boat.
2NAS	South Bay: All courses will have the same start and finish line - between Mark 2NAS and an orange flag on the Committee Boat..
OAK	Temporary Yacht Club Buoy on the estuary, off Oakland Y. C. pier 5 & 6

COURSE SHEET

Central Bay

Course #	Start								Finish	Distance
1	9	SH-S	3-S						FC	8
2	9	SH-S	3-S	8-S	3-S				FC	13
3	9	3-S	SH-S						FC	9.2
4	9	3-S	SH-S	3-S	8-S				FC	14.1
5	9	7-S	3-S	7-S	3-S				FC	9.5
6	9	2-S	1-S	3-S	1-P	2-S	1-S	3-S	FC	15.9
7	9	17-S	8-S	3-S	1-P	17-S	8-S	3-S	FC	19.5
8	9	2-S	24-S	3-S					FC	10
9	9	2-S	17-S	SH-S	3-S				FC	12.8

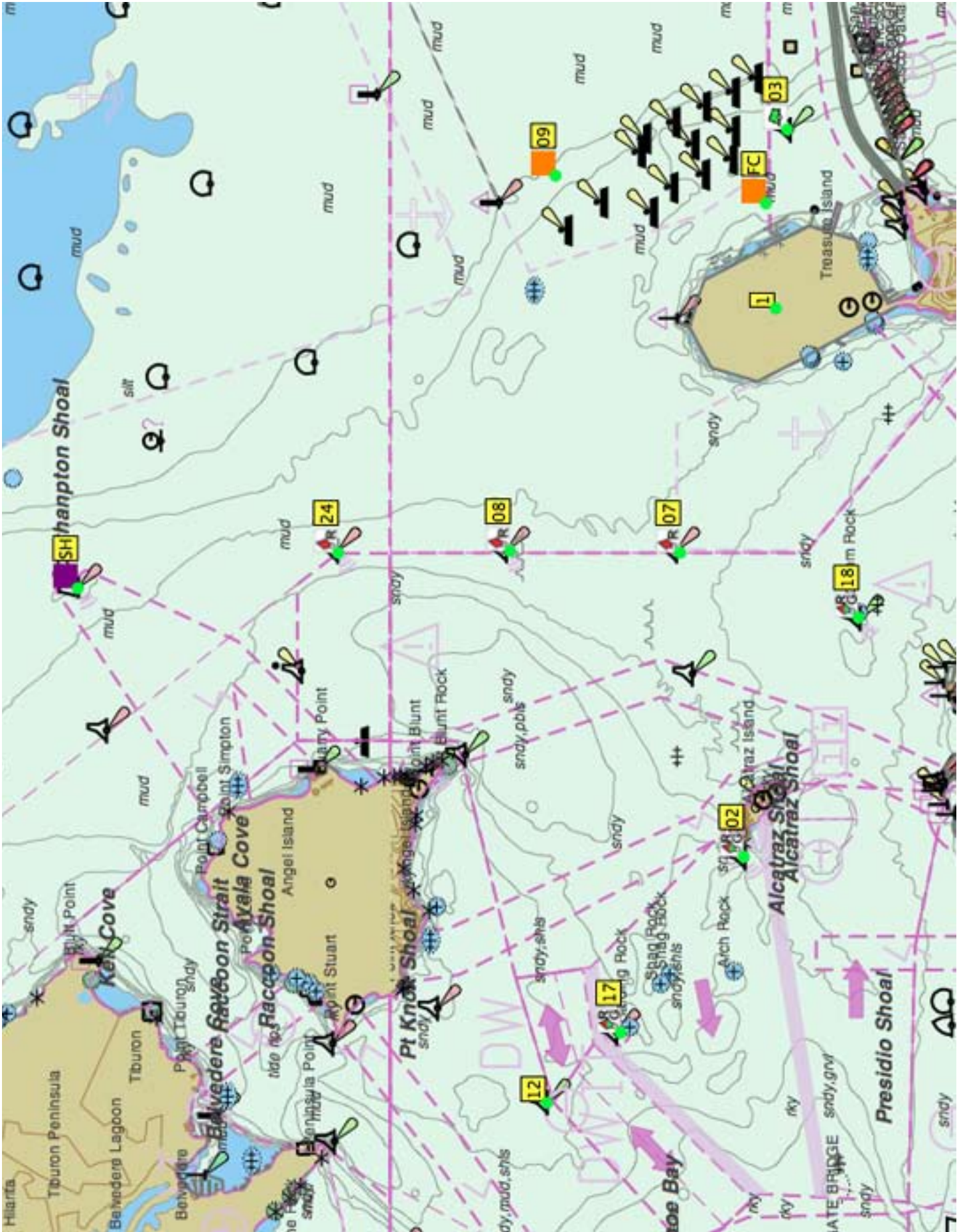
Central Bay - Long Course

Course #	Start								Finish	Distance
1	9	12-S	SH-S	BBSI					OAK	18.1
In course 1 above, BBSI shall be left to Starboard and not rounded										
2	9	17-P	18-P						OAK	13.7
In course 2 above, 18 shall be left to port and not rounded										

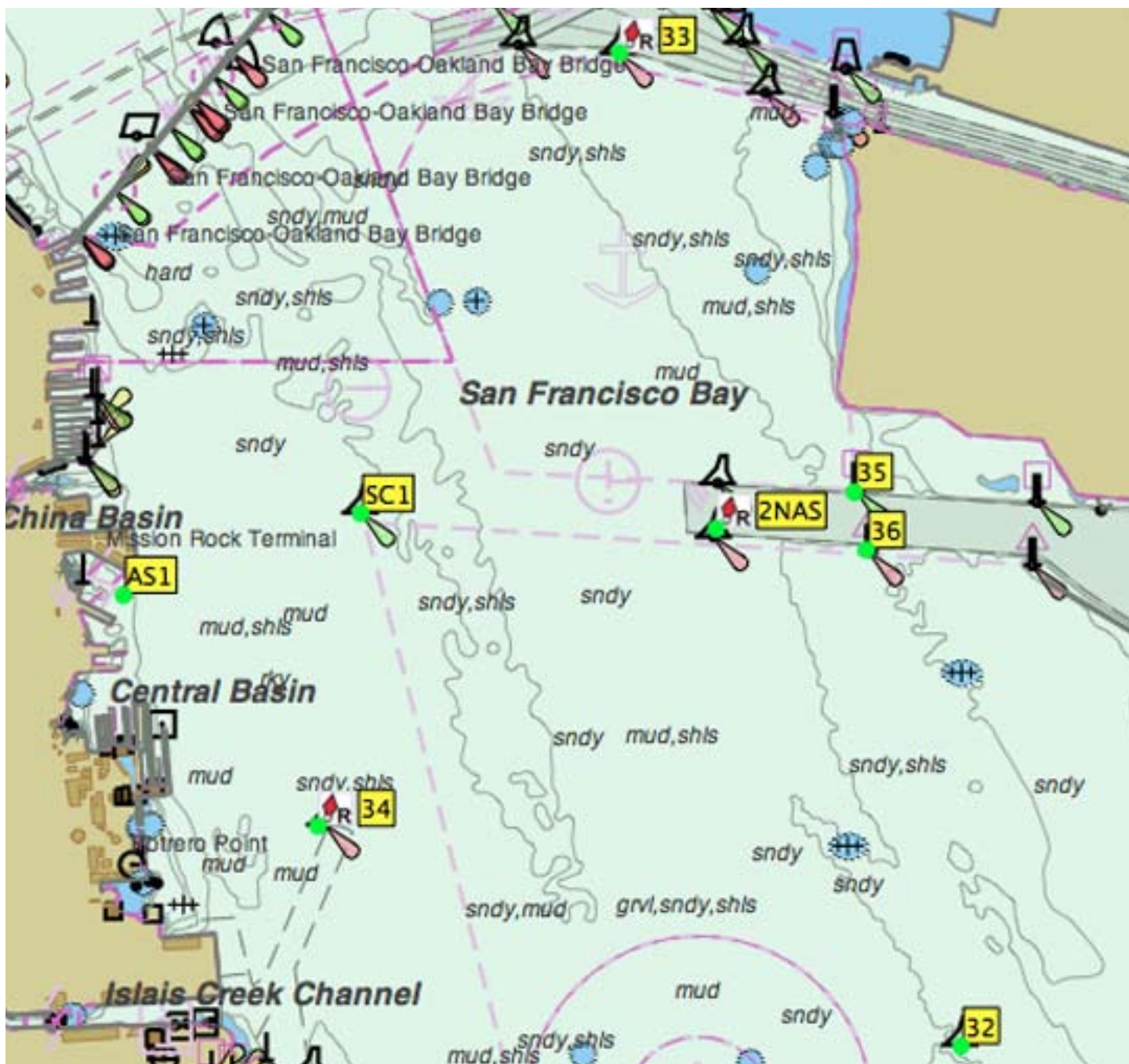
South Bay

Course #	Start								Finish	Distance
1	2NAS	32-P	33-P	32-P	33-P				2NAS	13.9
2	2NAS	33-S	36-S	33-S	32-P				2NAS	10.7
3	2NAS	33-S	32-S						2NAS	7
4	2NAS	SC-P	32-P	35-P	SC-P	35-P	SC-P	36-P	2NAS	12.9
5	2NAS	SC-P	32-P	35-P	SC-P	34-P	36-P		2NAS	11
6	2NAS	34-P	32-P	34-P	32-P	35-P			2NAS	10.8
7	2NAS	34-P	32-P	35-P					2NAS	6.3
8	2NAS	SC-P	32-S	34-S	35-P	SC-P	36-P		2NAS	12.1
9	2NAS	SC-P	36-P	AS-P	36-P	SC-P	36-P	35-P	2NAS	12.1
10	2NAS	SC-P	36-P	35-P	AS-P	36-P	35-P		2NAS	8.9
11										Intentional left blank
12	2NAS	SC-P	36-P	SC-P	36-P				2NAS	6.8

CENTRAL BAY MARKS



SOUTH BAY MARKS



RESTRICTED AREAS

Between the vertical "H" beam 20 yards west of the St. Francis Yacht Club and the shore to its south

Between Anita Rock limiting buoy and the shore to its south

Between Alcatraz Island and Alcatraz bell buoy

Between Angel Island (Point Blunt) and North Channel Buoy 3 (G FL1sec)

Between the most easterly shore of Yerba Buena Island and Pier I (India) of the existing Bay Bridge - see page 3.

After completing the first leg of the course the start / finish line is restricted and a yacht shall not cross the start/finish line unless she is finishing the course.